

LMS Energy and Cleanaway: powering the future

LMS Energy is proposing to install a new bioenergy facility at the Lucas Heights Resource Recovery Park (LHRRP). This facility will replace the existing on-site power station, which has been operating since 1998, with upgraded technology that continues the sustainable reuse of landfill biogas.

As Australia's leading landfill biogas company, LMS Energy has delivered **more than 65 biogas projects** across Australia, New Zealand and the United States over the last 30 years. Collectively, these projects generate enough renewable energy to power around 250,000 homes each day, reducing more than 5 million tonnes of carbon dioxide equivalent emissions annually.

Seeking Community Feedback

- As a State Significant Development (SSD), this project requires comprehensive assessments, including potential environmental impacts.
- We're currently developing an Environmental Impact Statement (EIS) and want to hear from the community.
- The EIS is expected to be on public exhibition in **June 2025**.



Figure 1: Artist' Impression of the Bioenergy Facility

LMS Energy and Cleanaway are proud to collaborate on this project to deliver long-term environmental benefits to the Sutherland Shire region and showcase best-practice environmental management and leadership.

The new bioenergy facility at Lucas Heights will:

- Generate up to 190,000 megawatt hours per year of renewable electricity, equivalent to powering around 30,000 homes.
- Reduce more than 1 million tonnes of carbon dioxide equivalent greenhouse gas emissions.

Benefits to the Sutherland Shire Community

This project will:

- Reduce landfill gas emissions through capture and sustainable energy recovery.
- Improve emission reduction activities in the Sutherland Shire.
- Have a minimal disruption to the community, as the new facility will be built adjacent to the existing power station at the LHRRP.

LUCAS HEIGHTS BIONERGY FACILITY

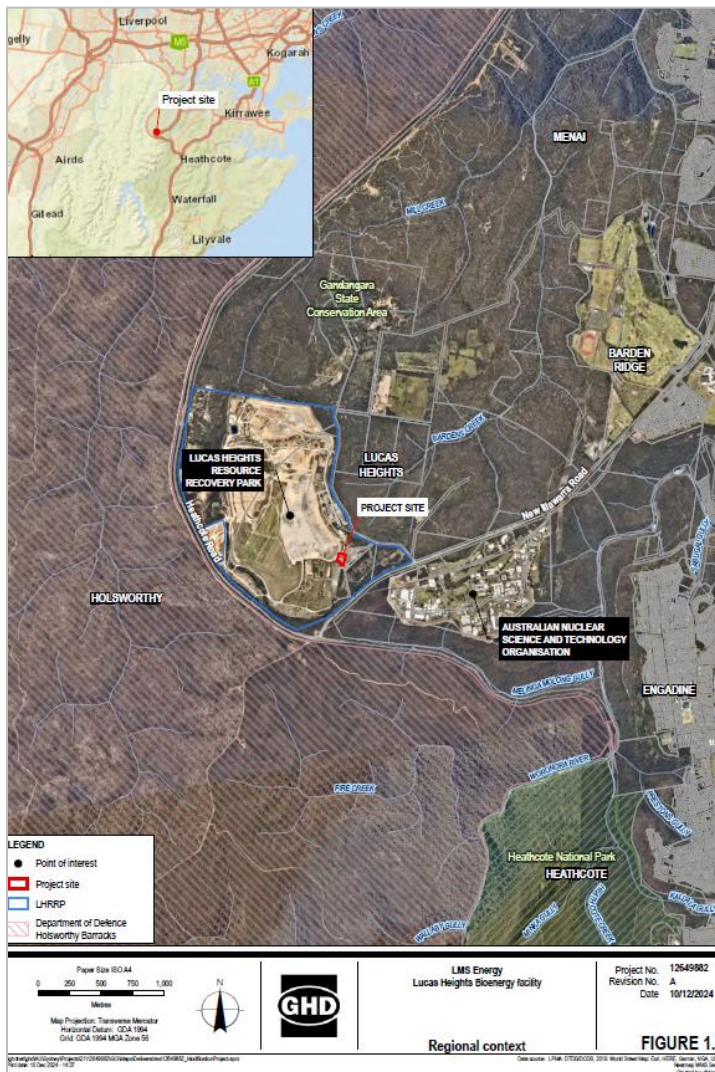


Figure 2: Project Site Location

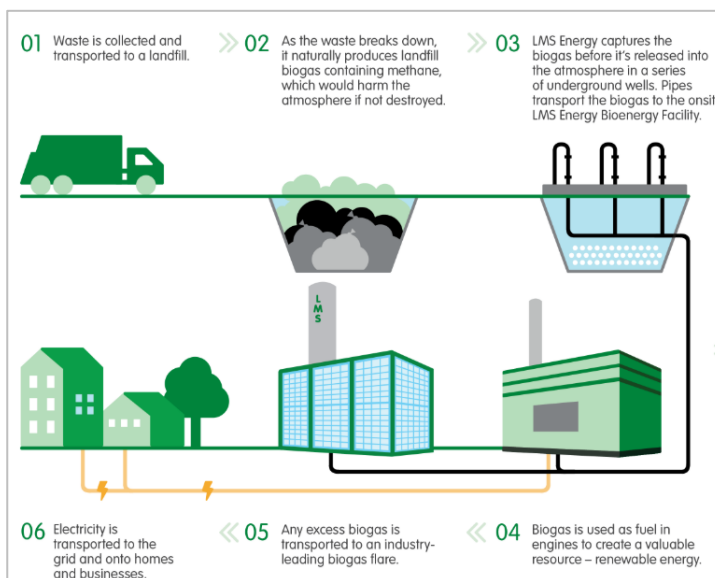


Figure 3: How it Works

Next steps:

- External consultant GHD has been engaged to prepare an Environmental Impact Statement (EIS)
- The EIS will follow the framework set by the Department for Planning, Housing and Infrastructure (DPHI) for all state significant developments
- This process includes engaging with relevant government and community stakeholders, and evaluating the impact of this project on the surrounding area
- Community feedback is welcomed as we develop the EIS
- We aim for the release of the EIS for public viewing in June 2025 to allow community members to make a formal submission on the project
- The DPHI will assess the project for a final determination by the NSW Minister for Planning (or delegate)

For more information, visit www.lms.com.au/lucas-heights

Your Feedback:

For further information or to make a comment, please use the following contact details:

Email: cominput@GHD.com

Phone: 1800 810 680

Scan the QR for more details on this project



Feedback must be given before 29 May 2025 to be considered within EIS. When making an enquiry, please reference 'Lucas Heights Bioenergy Facility'.